



# Tissue donation in the **DGFG** network

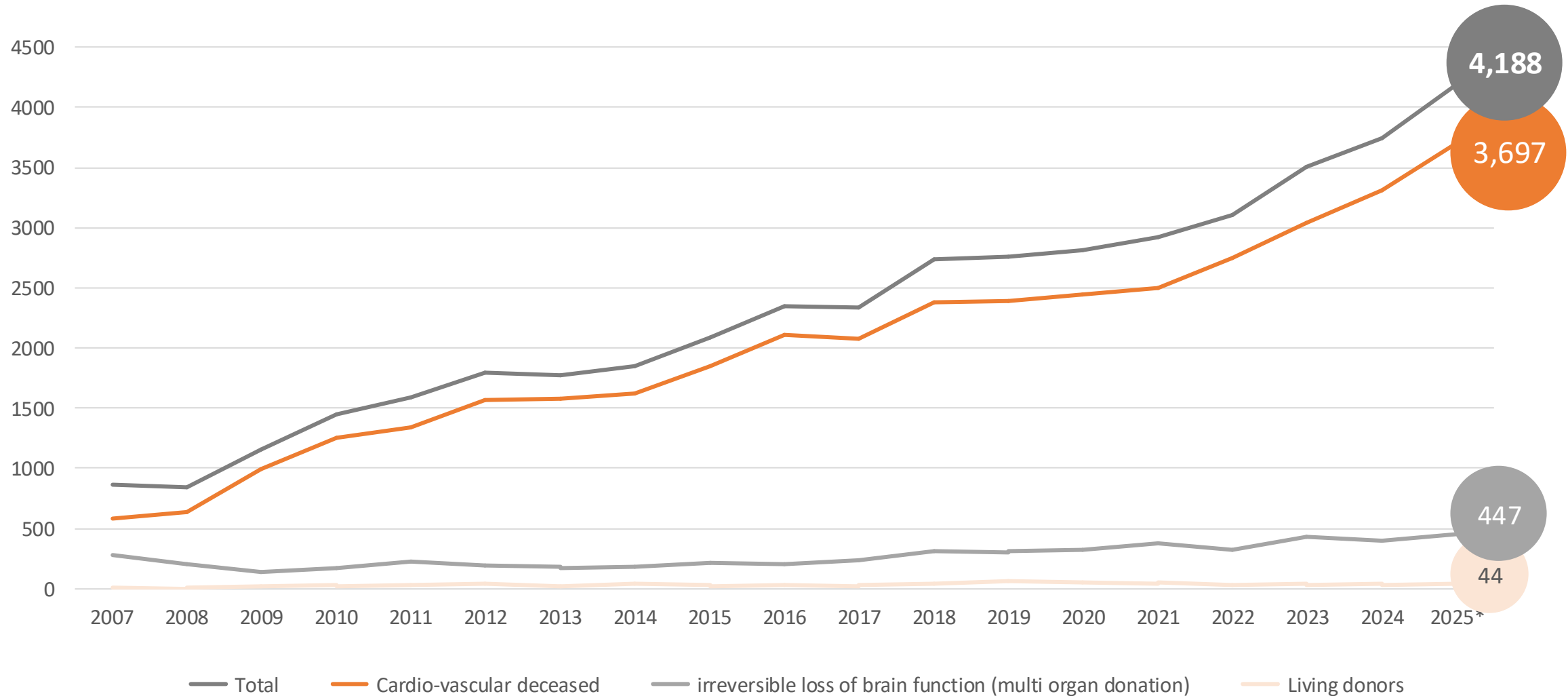
Current figures on the development of tissue donation

## 2025 in figures.

|        |  |
|--------|--|
| 61,785 | donor notifications (+ 8.3%).                |
| 12,113 | interviews with donors & relatives (+11.8%). |
| 4,585  | consents (+11%).                             |
| 37.9%  | consent rate (-0.2%).                        |
| 4,188  | tissue donations (+11.8%).                   |
| 8,837  | donated tissue (+2.5%).                      |
| 9,640  | distributed tissue transplants (+12%).       |

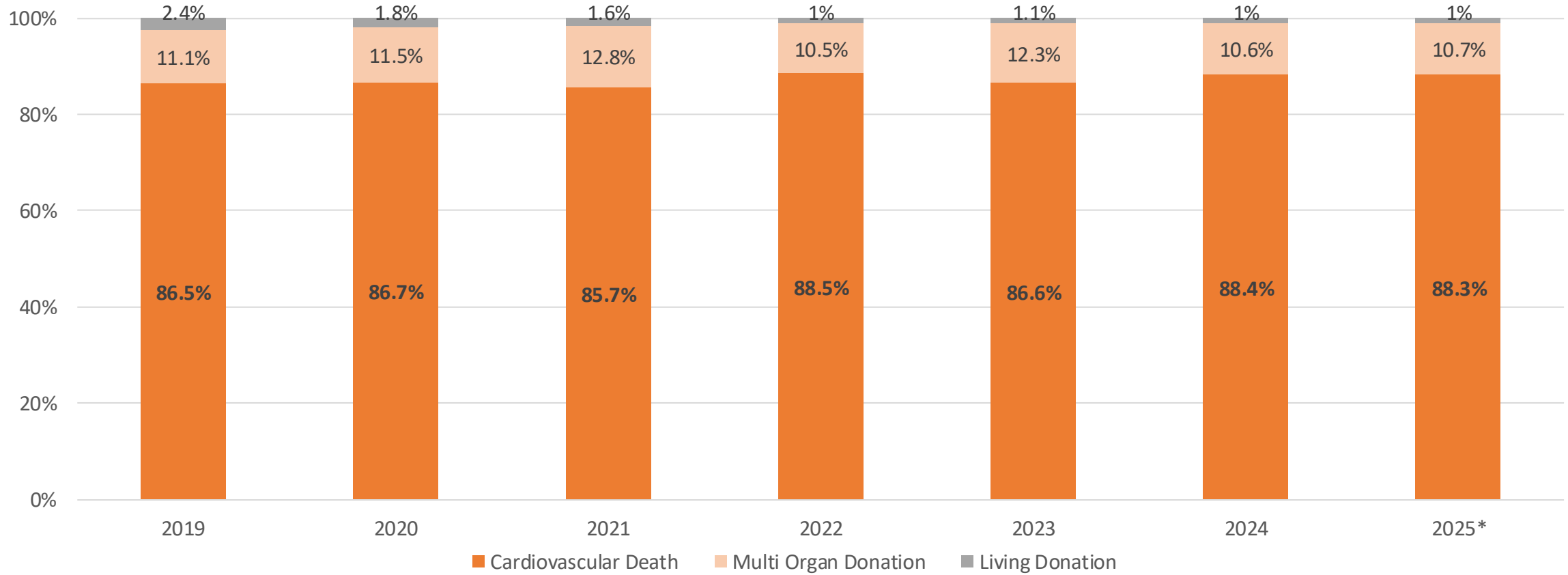
# Number of tissue donors from 2007 to 2025\*

– based on the kind of donation



\*Note: All information on the annual figures of 2025 is preliminary as of 29.12.2025

## Proportion of tissue donations from organ donation, living donation and after cardiovascular death



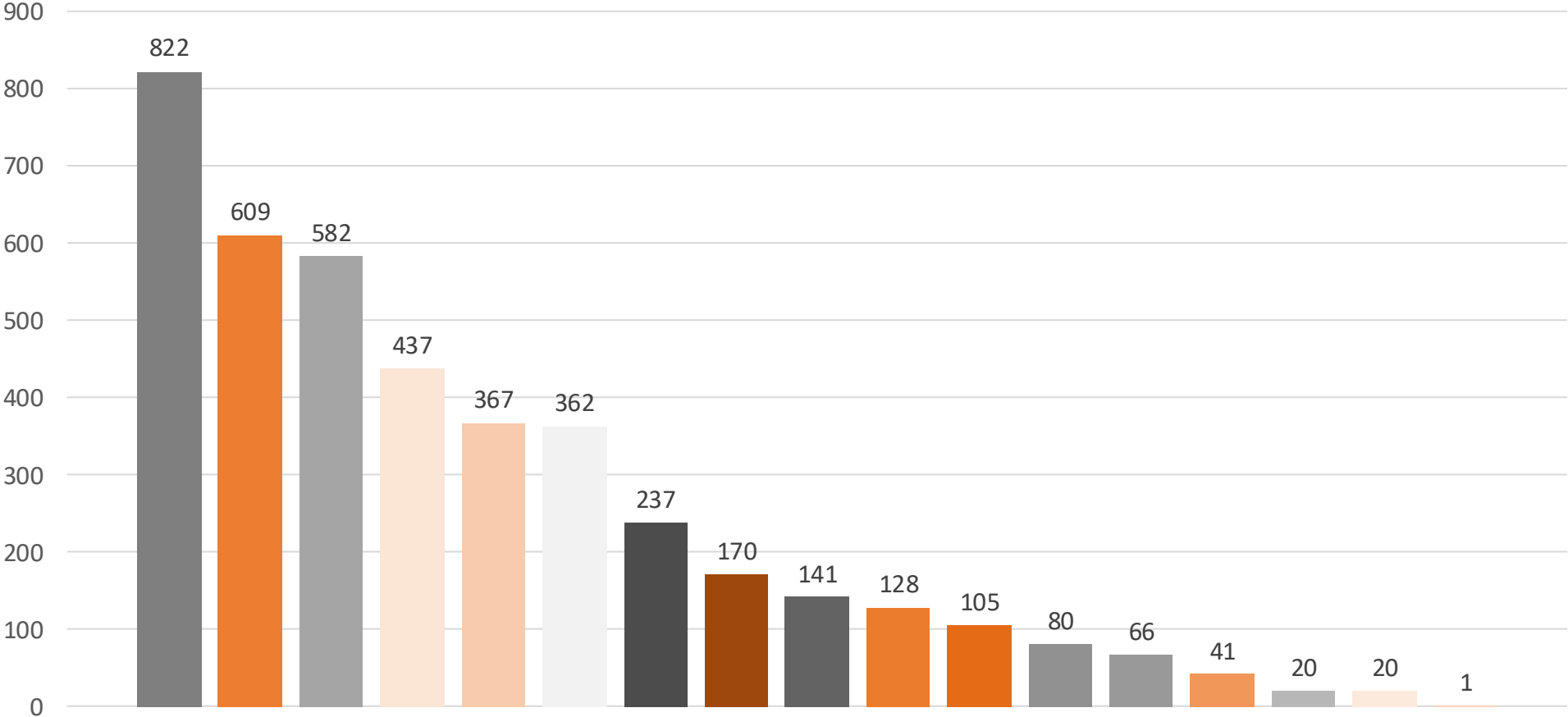
In 2025, tissue donations were performed in more than **88 percent** of cases following cardiac arrest.



*\*Note: All information on the annual figures of 2025 is preliminary as of 29.12.2025*

# Tissue donations by states in 2025\*

Regional comparison of the number of tissue donations



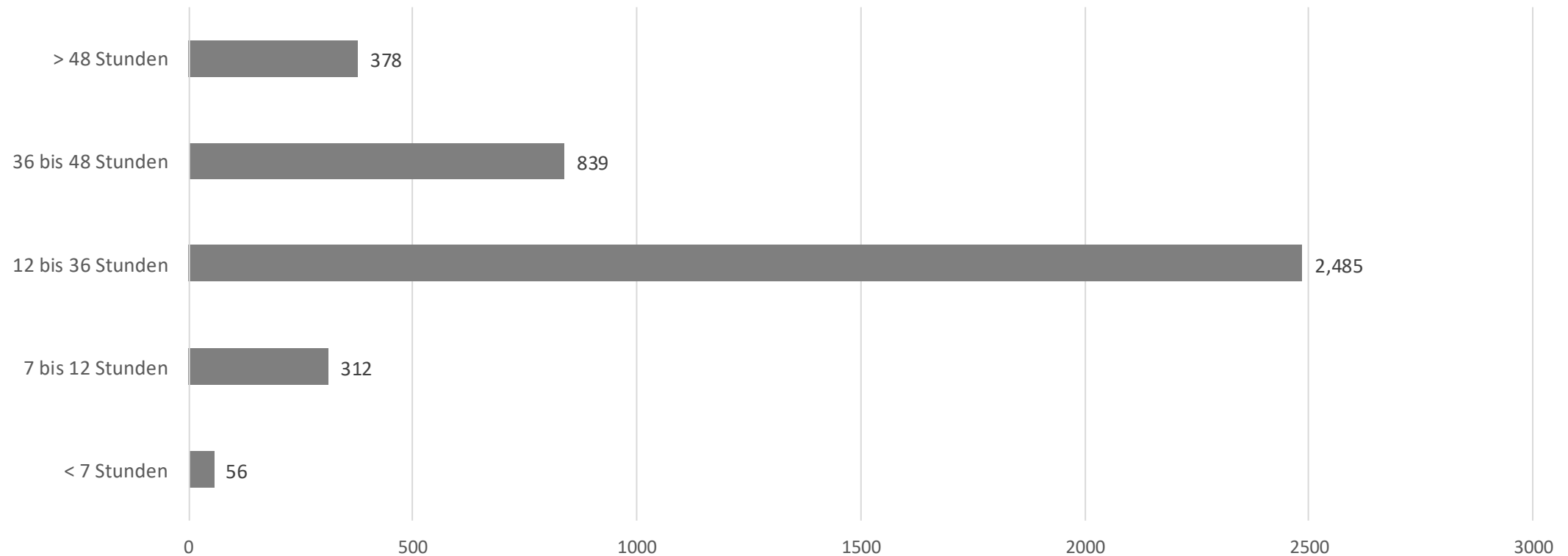
Legend reading:  
Number of tissue donations in the individual states, sorted in descending order (from left to right)

- Lower Saxony
- Saxony
- North Rhine-Westphalia
- Mecklenburg-Western Pomerania
- Ba-Wü
- Saxony-Anhalt
- Bavaria
- Thuringia
- Bremen
- Berlin
- Hamburg
- Hesse
- Brandenburg
- Saarland
- Schleswig-Holstein
- Rhineland-Palatinate
- Ausland

\*Note: All information on the annual figures of 2025 is preliminary as of 29.12.2025

# Retrieval time frame in 2025\*

for cornea donations –  $n = 4,070$



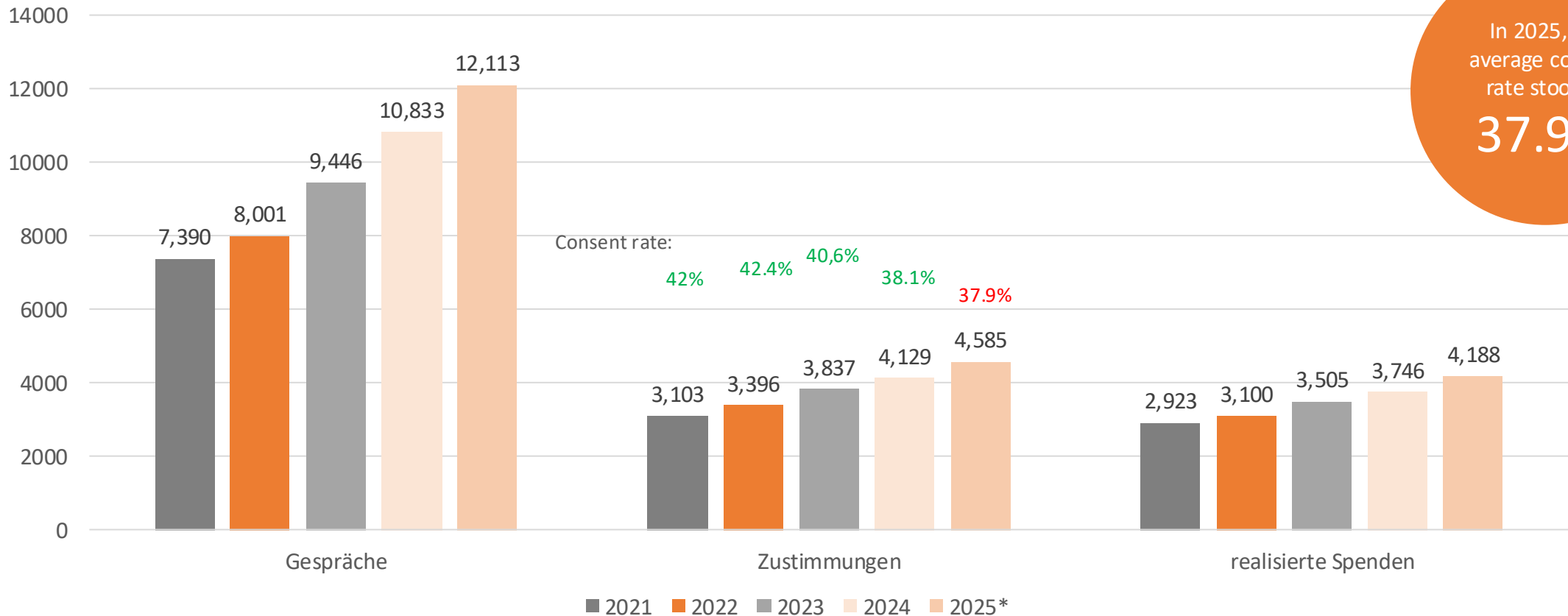
\*Note: All information on the annual figures of 2025 is preliminary as of 29.12.2025

Corneal donation is possible  
**up to 72 hours after death.**

Relatives have more time to make a decision.



# Development of consents and donations from 2021-2025\*



In 2025, the average consent rate stood at **37.9%**.

*Last year, the coordinators processed 61,785 reports.*

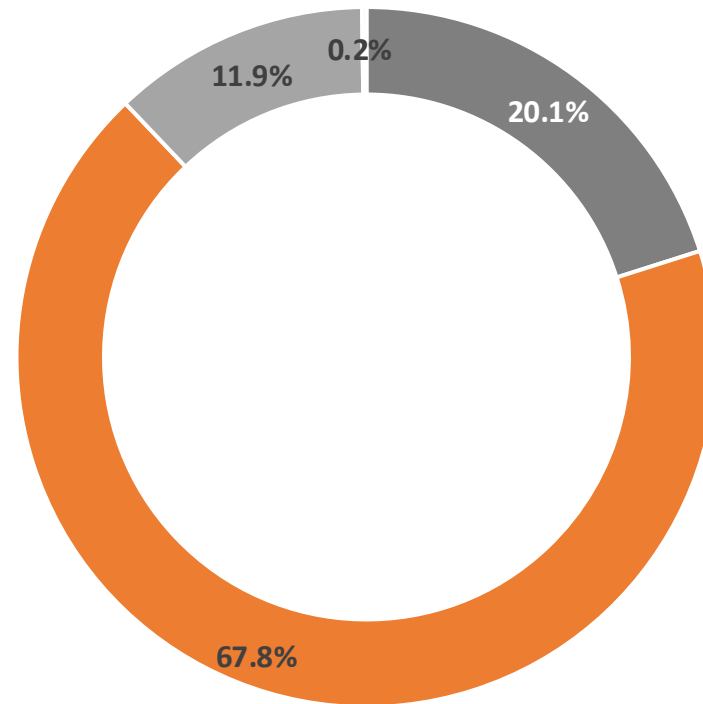
\*Note: All information on the annual figures of 2025 is preliminary as of 29.12.2025

In around **69 percent of cases**, consent to tissue donation is given on the basis of the **presumed will** of the deceased.

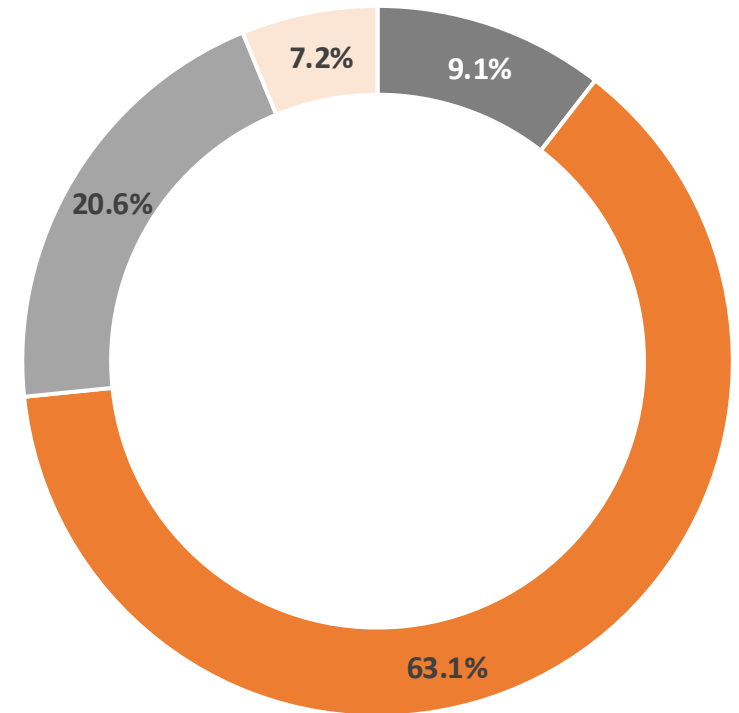


# Expression of will in 2024\*

In case of consent  
n = 4,538\*\*



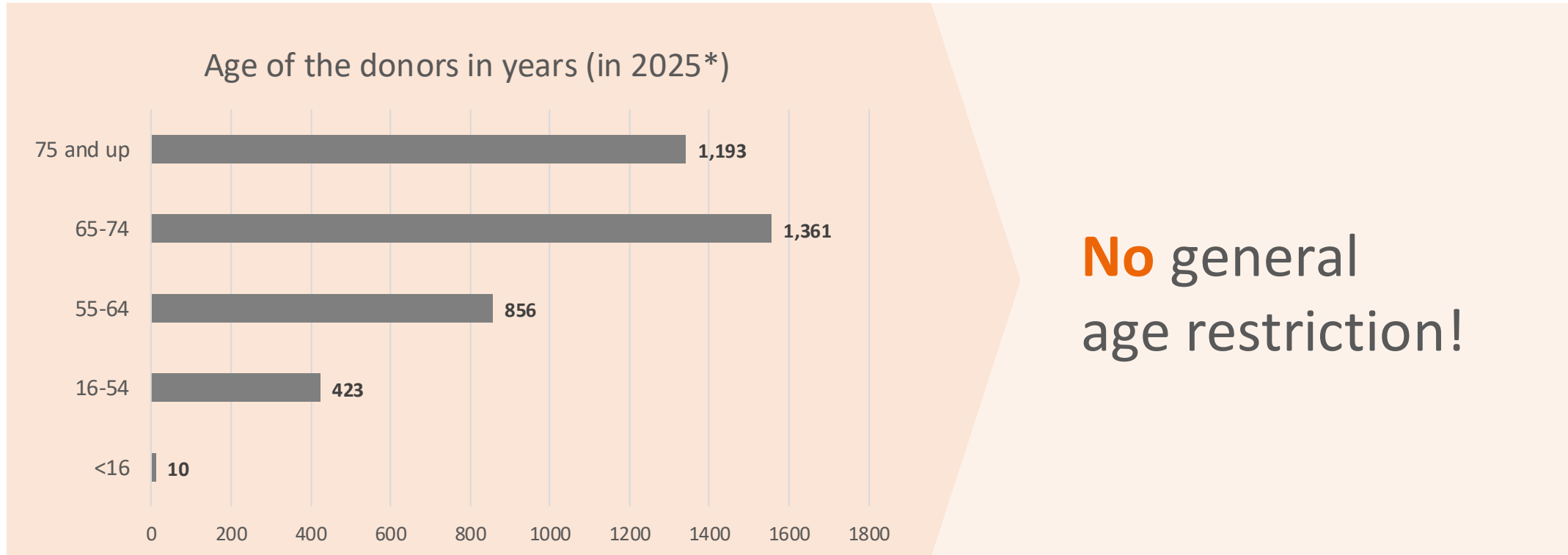
In case of rejection  
n = 7,528



- documented will
- presumed will
- verbally expressed will
- not specified

\*\*excluding the consent of the living donors (47)

# How old can donors be?



**No** general age restriction!

Tissue donation is possible well into old age.



# Development of tissue donation: Donated tissue

\*\* Number of full donations without single preparations

|                              | 2019         | 2020         | 2021         | 2022         | 2023         | 2024*        |
|------------------------------|--------------|--------------|--------------|--------------|--------------|--------------|
| Cornea                       | 5,234        | 5,401        | 5,612        | 6,022        | 6,736        | 7,195        |
| Heart valves                 | 378          | 393          | 445          | 328          | 508          | 395          |
| Blood vessels                | 206          | 267          | 335          | 278          | 259          | 144          |
| Bone and soft tissue         |              |              |              | 30**         | 44**         | 19**         |
| Placenta (amniotic membrane) | 40           | 20           | 30           | 21           | 24           | 27           |
| <b>Total</b>                 | <b>5,888</b> | <b>6,081</b> | <b>6,422</b> | <b>6,679</b> | <b>7,571</b> | <b>7,761</b> |

In 2025, 8,837 donated tissues were received by the tissue banks in the DGFG network, including 8,099 corneal preparations. Since 2022, the DGFG has been donating musculoskeletal tissue (bones, tendons and ligaments) with its own mobile teams: the DGFG was able to realize 32 so-called MSG donations in 2025. The resulting 680 tissue preparations were sent to the non-profit German Institute for Cell and Tissue Replacement (DIZG) in Berlin for preparation.

\*Note: All information on the annual figures of 2025 is preliminary as of 29.12.2025

# Proportion of donated tissue in 2025\*

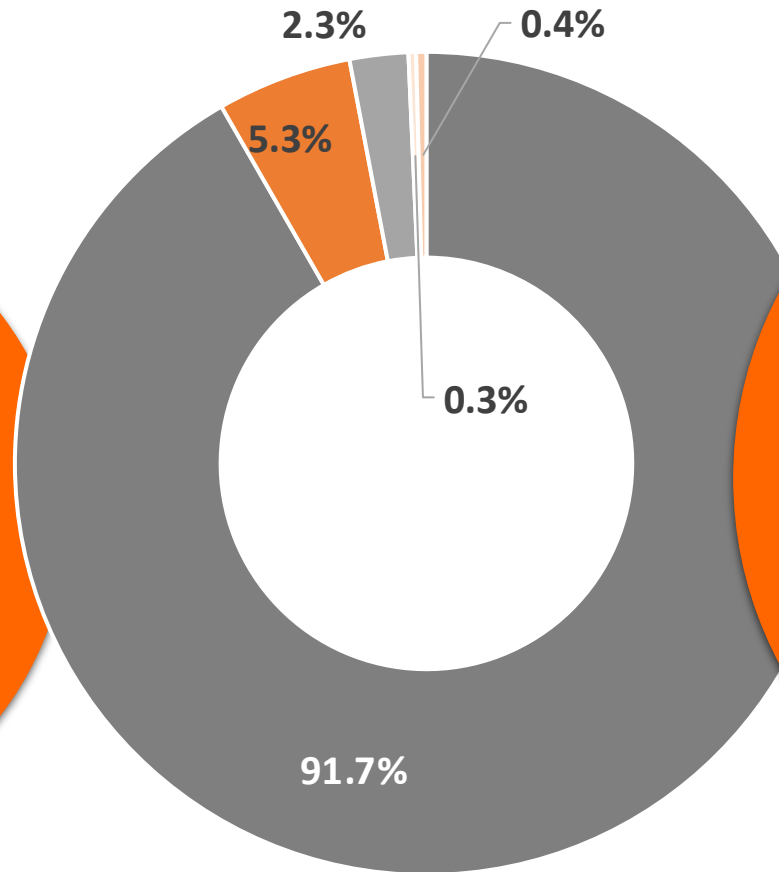
Source: DGFG network,  $n = 7,761$



Of the approx. **12,800** donated corneas that were prepared in tissue banks in Germany in 2022,

**9,513**

were delivered for transplantation.\*\*



Around **56%** of corneal donations in Germany are organized by the tissue donation coordinators of the DGFG.

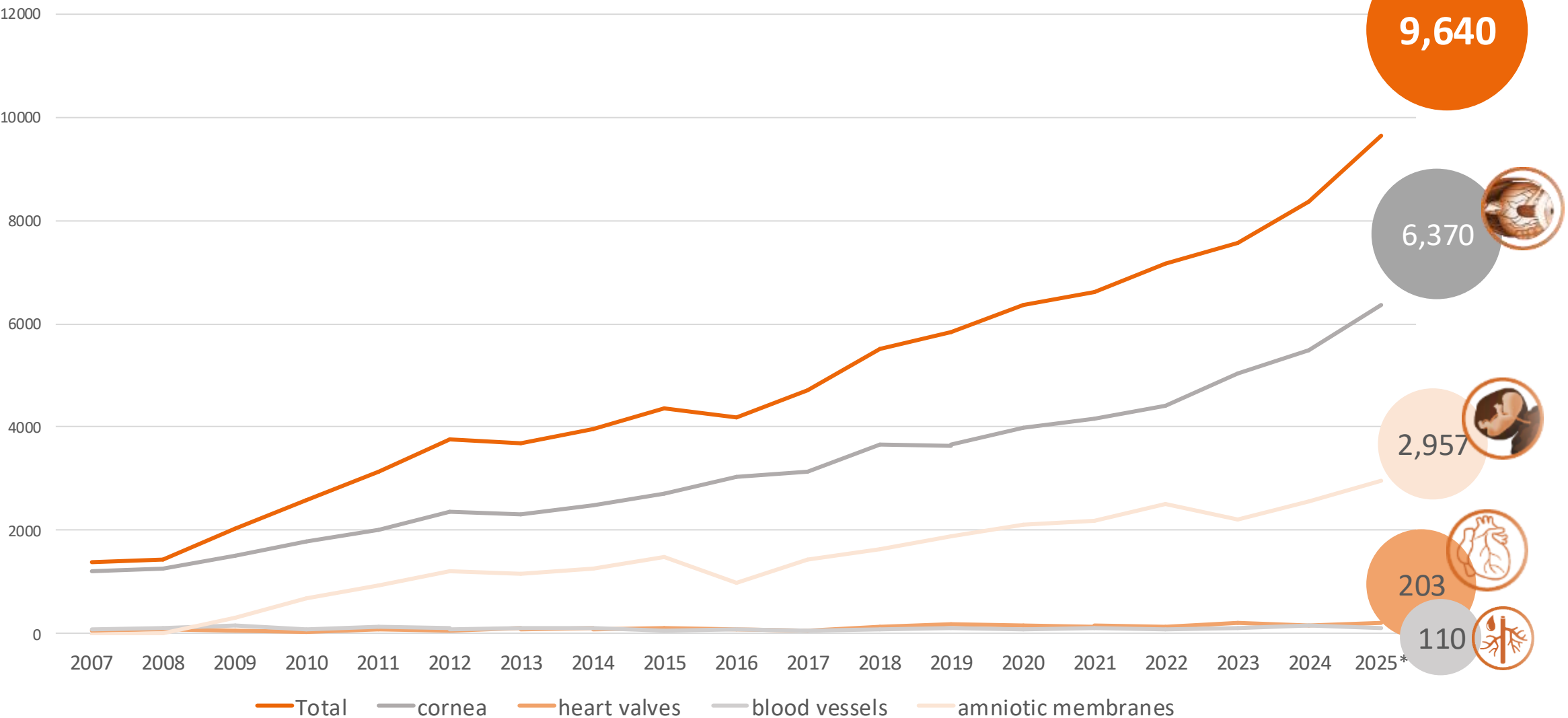
**More than half** of the corneas transplanted in Germany come from the DGFG network.

\*\*Source: Tissue vigilance report of the Paul-Ehrlich-Institute / 2022, p. 13:  
[https://www.pei.de/SharedDocs/Downloads/DE/newsroom/pflichtberichte/gewebevigilanzberichte/gewebevigilanzbericht-2022.pdf?\\_\\_blob=publicationFile&v=3](https://www.pei.de/SharedDocs/Downloads/DE/newsroom/pflichtberichte/gewebevigilanzberichte/gewebevigilanzbericht-2022.pdf?__blob=publicationFile&v=3)

- corneas
- heart valves
- blood vessels
- amniotic membranes/ placentas
- bones, tendons and ligaments (0.24%)

\*Note: All information on the annual figures of 2025 is preliminary as of 29.12.2025

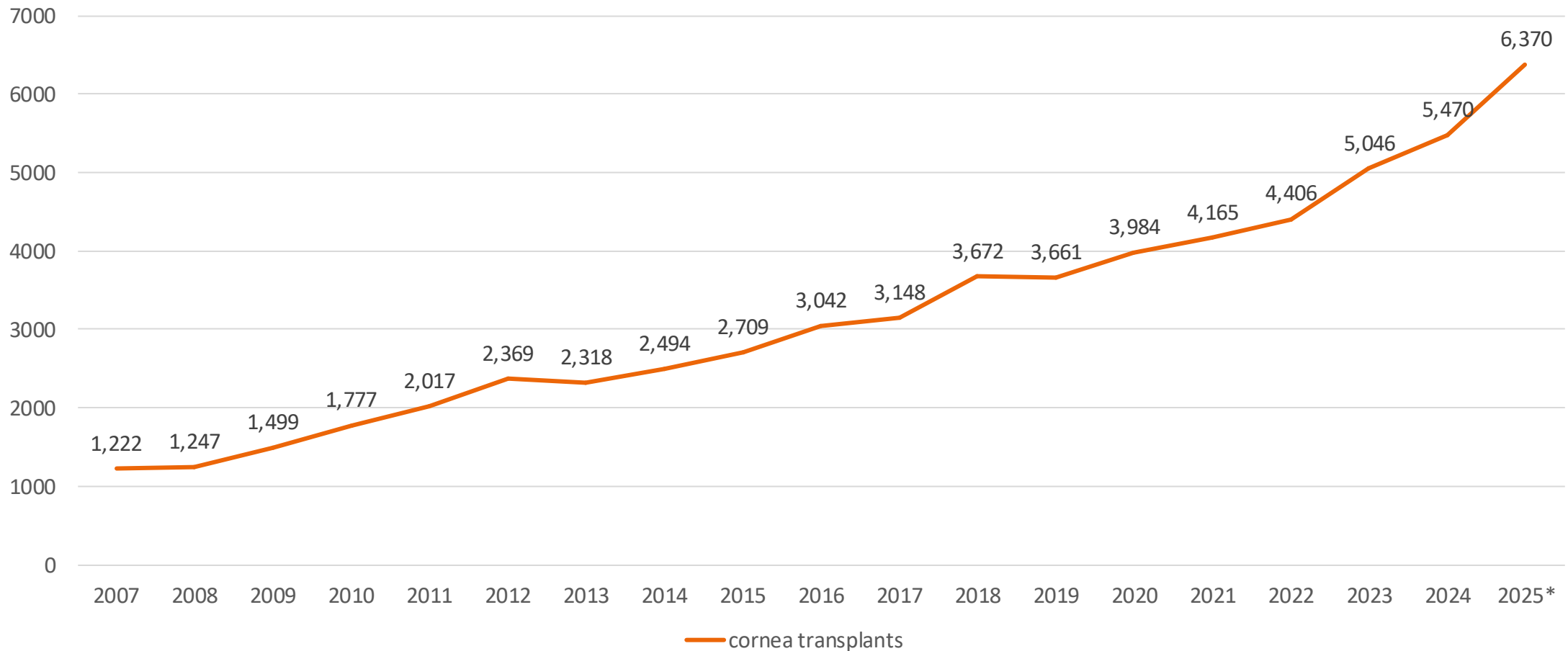
# Development of distributed tissue transplants from 2007 to 2025\*



The number of bones, tendons and ligaments is not included in the DGFG statistics, as these transplants are allocated via the DIZG.

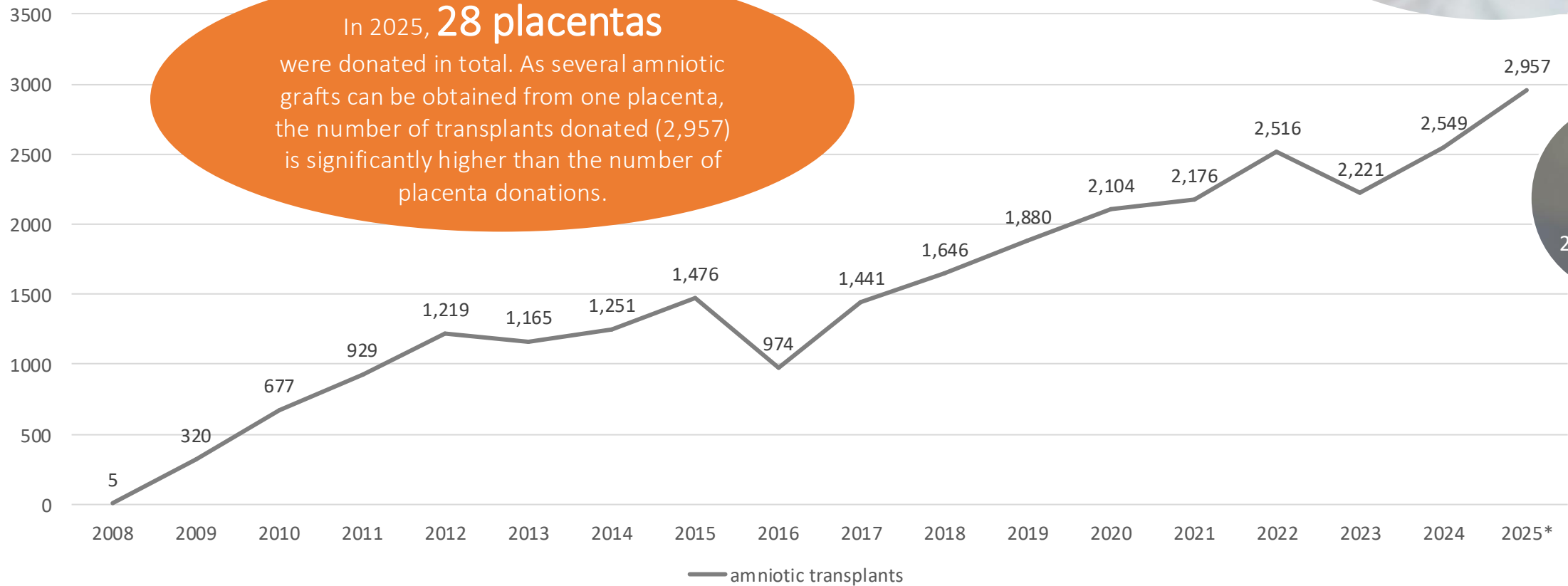
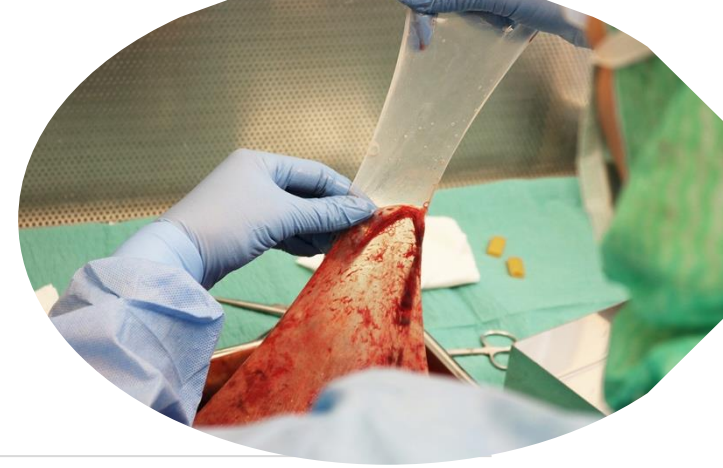
\*Note: All information on the annual figures of 2025 is preliminary as of 29.12.2025

# Number of distributed corneas from 2007 to 2025\*



\*Note: All information on the annual figures of 2025 is preliminary as of 29.12.2025

# Number of distributed amniotic membranes from 2008 to 2025\*

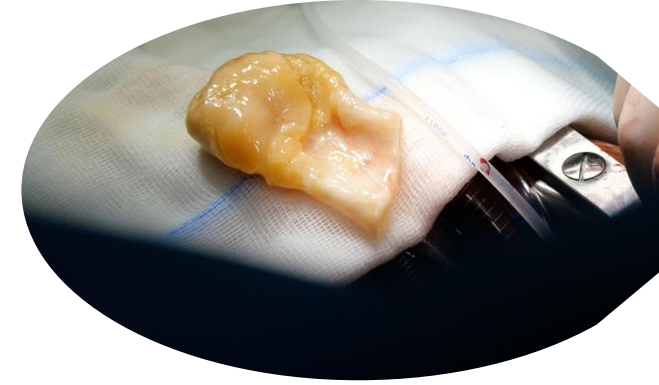


In 2025, **28 placentas** were donated in total. As several amniotic grafts can be obtained from one placenta, the number of transplants donated (2,957) is significantly higher than the number of placenta donations.

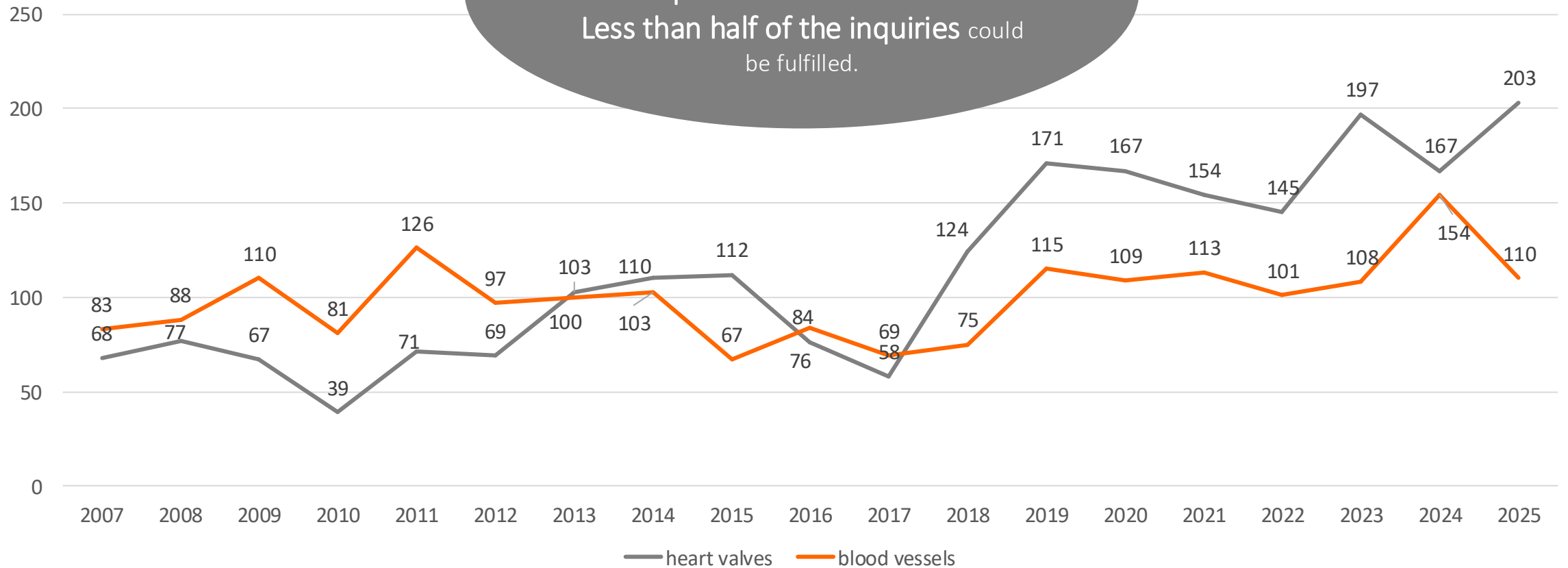
of which in 2025: 209 AmnioClip-plus

\*Note: All information on the annual figures of 2025 is preliminary as of 29.12.2025

# Number of donated heart valves and blood vessels from 2007 to 2025\*



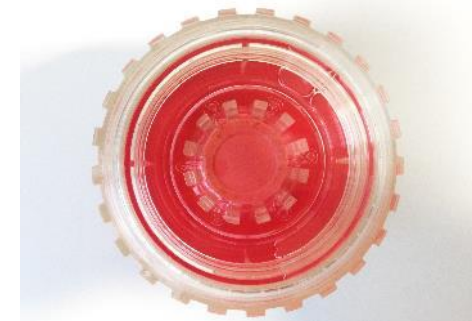
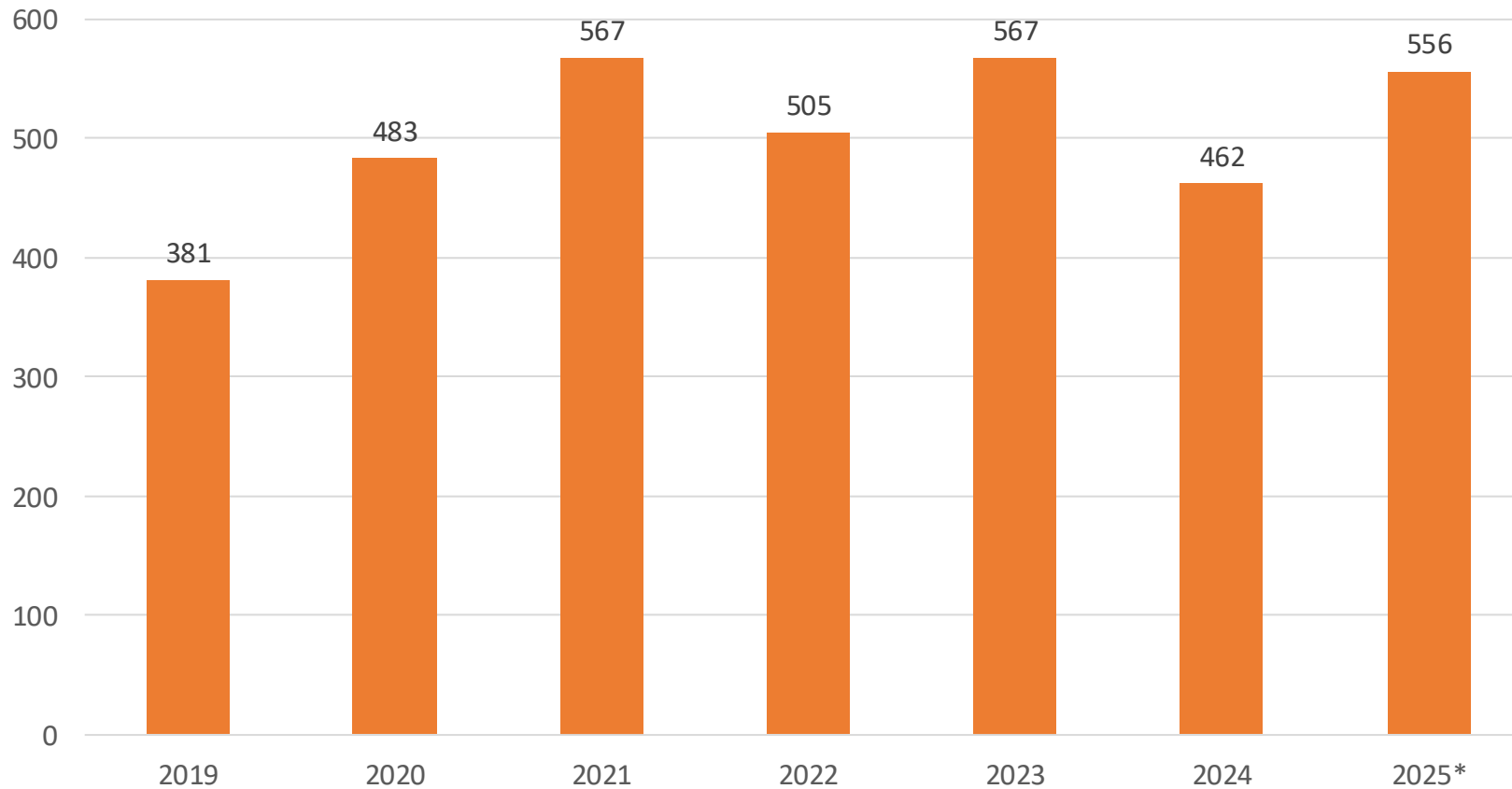
Shortage of cardiovascular tissue:  
The allocation office received over  
**440 inquiries** for a heart valve in 2024.  
**Less than half of the inquiries** could  
be fulfilled.



\*Note: All information on the annual figures of 2025 is preliminary as of 29.12.2025

## Number of distributed LaMEK from 2018 to 2025\*

Of the 6,370 corneal transplants, 511 were LaMEK (prepared corneal lamella) and 45 were LaMEK preloaded – preloaded corneal lamella in the implantation cartridge (picture on the right).



*Worth a visit!*



**Die Gewebespende –**  
*dem Leben eine Brücke bauen*



**DGFG** erLeben